

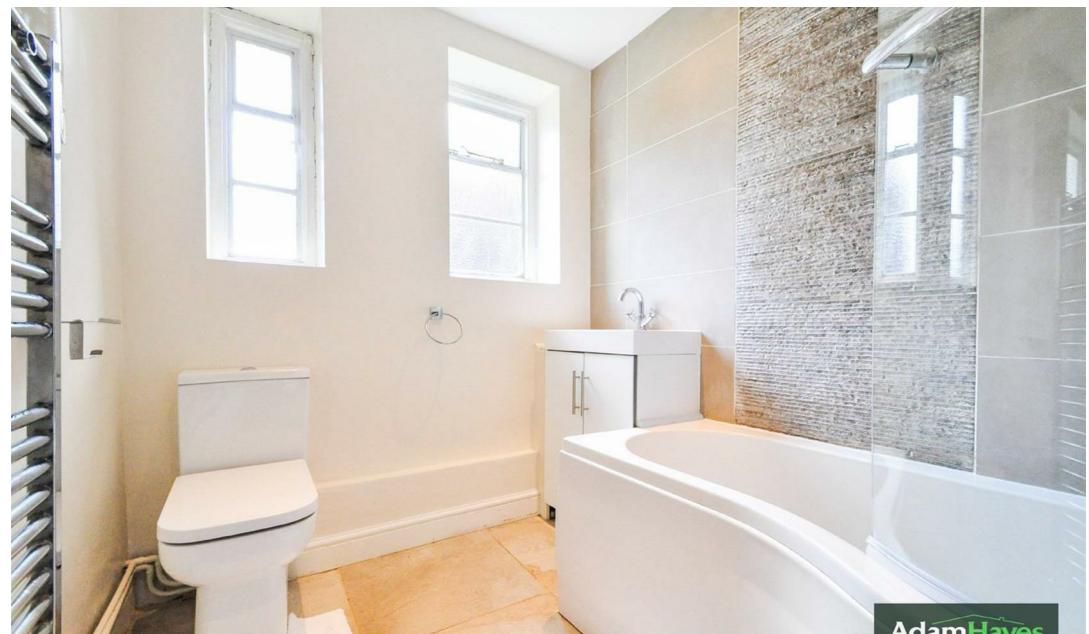


Denison Close, East Finchley, N2

 2 Bedrooms  1 Bathroom  1 Reception

£1,975 PCM





Adam Hayes - East Finchley Office - Lettings 158 High Road, East Finchley, London, N2 9AS

Tel: 0208 883 2621 Email: [info@adam-hayes.co.uk](mailto:info@adam-hayes.co.uk) Web: [www.adam-hayes.co.uk](http://www.adam-hayes.co.uk)

Denison Close, East Finchley, N2

£1,975 PCM

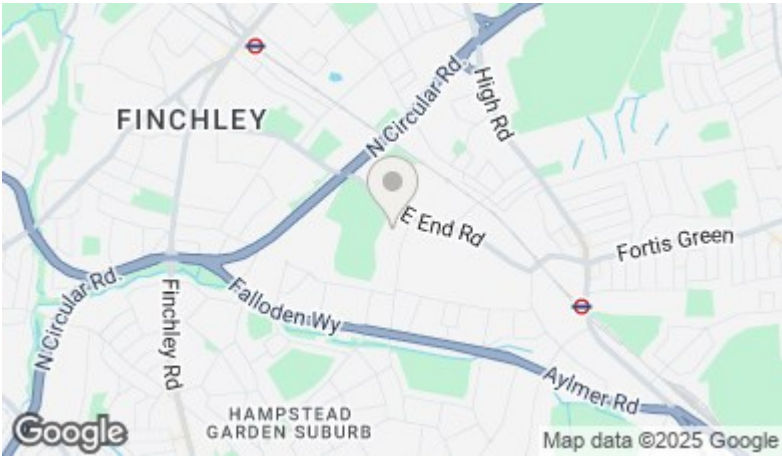
2 Bedrooms 1 Bathrooms 1 Receptions

Key Features

- Two Double Bedroom Flat
- 15ft Reception
- Parquet Wooden Flooring
- Popular Location
- Communal Gardens

Other Information

Council Tax Band: D  
Length of Tenancy: Long Let  
Deposit: £2,278

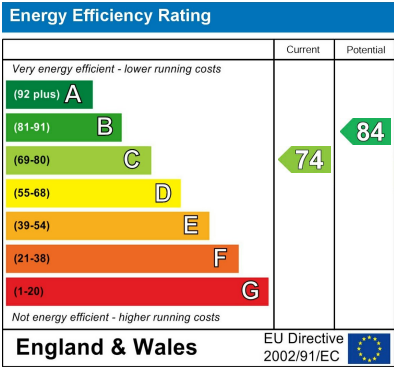


Nearest Stations

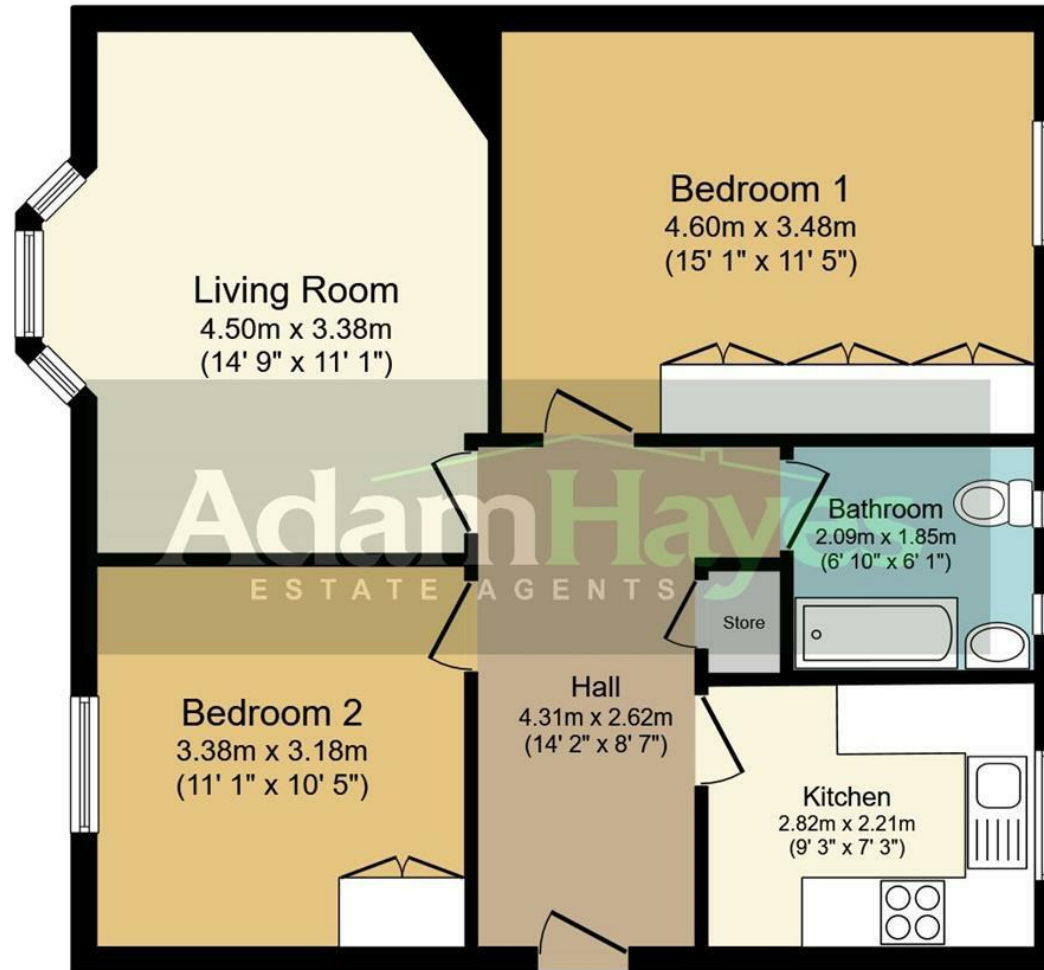
- East Finchley - 1.1 Miles
- Finchley Central - 1.2 Miles

Property Description

Conveniently located off Ossulton Way and within walking distance to local shops, transport facilities and amenities it is well presented two double bedroom, first floor purpose built apartment. The property benefits from approximately 15' ft reception room, parquet wooden flooring, a modern kitchen, gas central heating and use of communal gardens. To really appreciate the size, condition and location an internal viewing is highly recommended via the landlords sole agents Adam Hayes Estate Agents.







## Floor Plan

Total floor area 64.3 sq.m. (692 sq.ft.) approx

This plan is for illustration purposes only and may not be representative of the property. Plan not to scale.

These particulars, whilst believed to be accurate, are set out as a general outline only for guidance and do not constitute any part of an offer or contract. Intending purchasers or prospective tenants should not rely on them as statements or representation of fact, but must satisfy themselves by inspection or otherwise as to their accuracy. We have not carried out a detailed survey, not tested the services, appliances and specific fittings. Room sizes should not be relied upon for carpets and furnishings. The measurements given are approximate. No person in this firm's employment has the authority to make or give any representation or warranty in respect of the property.